

SERIES 2500

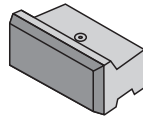
SPECIFICATIONS



STANDARD
48" x 24" x 24"
2,250 Lbs.



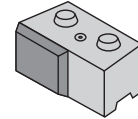
RIGHT CORNER HALF
24" x 24" x 24"
1,250 Lbs.



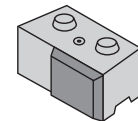
RECESS CAP
48" x 24" x 24"
1,700 Lbs.



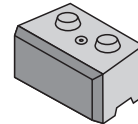
RECESS CAP HALF
24" x 24" x 24"
850 Lbs.



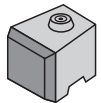
LEFT INSIDE CORNER
48" x 24" x 24"
2,250 Lbs.



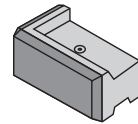
RIGHT INSIDE CORNER
48" x 24" x 24"
2,250 Lbs.



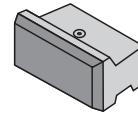
KEY
44" x 24" x 24"
2,200 Lbs.



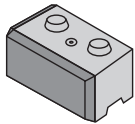
HALF
24" x 24" x 24"
1,200 Lbs.



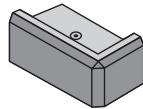
LEFT RECESS CAP CORNER
48" x 24" x 24"
1,900 Lbs.



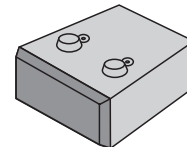
RECESS CAP KEY
44" x 24" x 24"
1,500 Lbs.



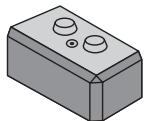
LEFT CORNER
48" x 24" x 24"
2,350 Lbs.



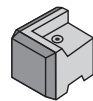
RIGHT RECESS CAP CORNER
48" x 24" x 24"
1,900 Lbs.



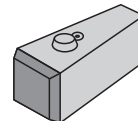
52" BASE
48" x 24" x 52"
3,910 Lbs.



RIGHT CORNER
48" x 24" x 24"
2,350 Lbs.



LEFT RECESS CAP CORNER HALF
24" x 24" x 24"
1,100 Lbs.



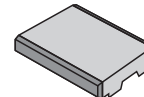
52" BASE HALF
24" x 24" x 52"
2,000 Lbs.



LEFT CORNER HALF
24" x 24" x 24"
1,250 Lbs.



RIGHT RECESS CAP CORNER HALF
24" x 24" x 24"
1,100 Lbs.



COPING
48" x 7" x 30"
1,125 Lbs.
*Textured on 2 opposite sides.

NOTES



WETCAST
WARRANTY



WALLS &
COLUMNS

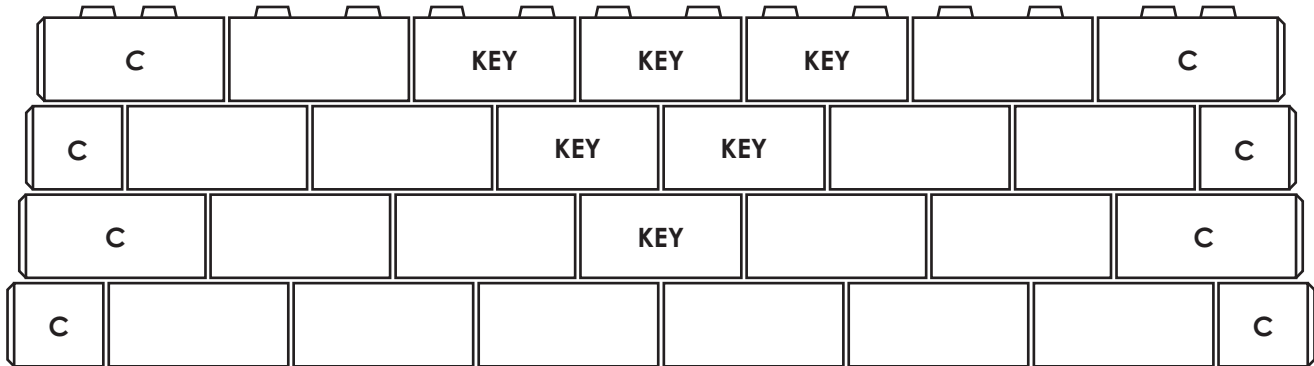
COLOR SWATCHES AVAILABLE AT LAMPUS.COM • ALL WEIGHTS ARE APPROXIMATE.

APPLICATIONS

SERIES 2500

LAYING PATTERNS

Series 2500 blocks have a 2" set back. Corner blocks have a 2" set back and a 2" step in. In order to compensate for the batter when building a wall with two corners, the Key blocks are 4" shorter than the standard blocks.

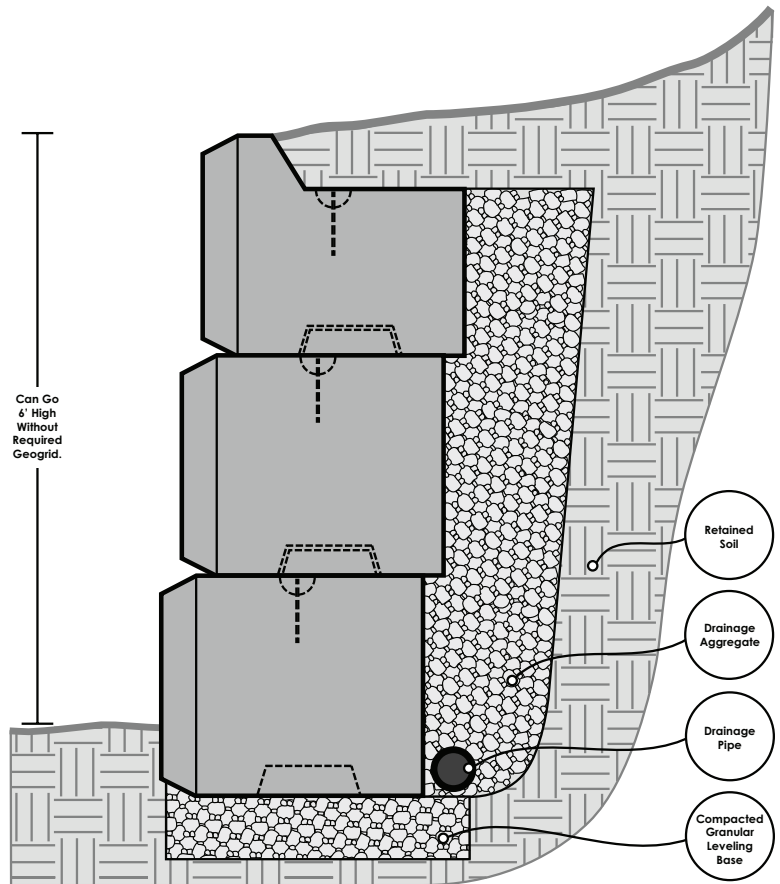


*C = Corner Block

DETAILS

- Series 2500 Standard block create 8 Sq. Ft. of face per unit.
- Series 2500 Standard block create a 2" setback per course.
- Series 2500 can generally go to 6' without GeoGrid. (Actual field conditions will dictate when engineering and grid is required.)
- Use of Series 2500 52" Base Block allow taller walls before grid is needed.
- String lines should be run to the straight edge on the top front of the block.
- Series 2500 blocks are not delivered on pallets.
- Series 2500 Standard units are stock items. Not all fittings will be stocked in large quantities. Call for availability.

TYPICAL CROSS SECTION



COLOR SWATCHES AVAILABLE AT LAMPUS.COM • ALL WEIGHTS ARE APPROXIMATE.