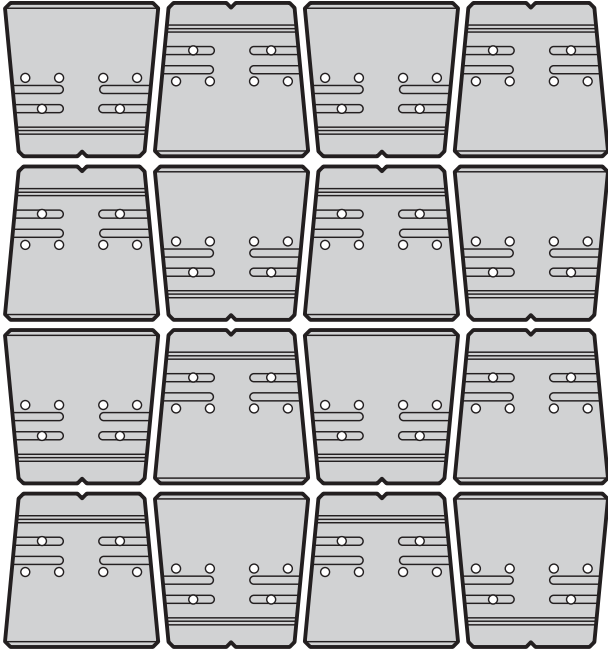


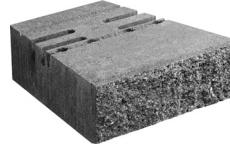
# VERSA-LOK® ACCENT

## PALLET OVERVIEW



48 units / pallet  
 16 sq. ft. / pallet  
 3 layers / pallet  
 1,795 lbs. / pallet

## SPECIFICATIONS

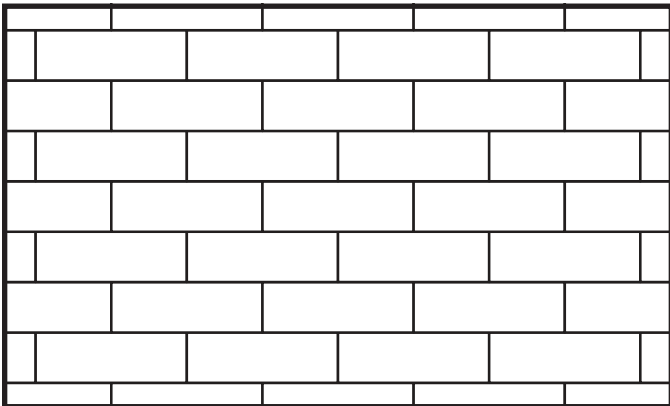


12" x 12" x 4"  
 37 lbs. / unit  
 3 units / sq. ft.  
 3' minimum radius

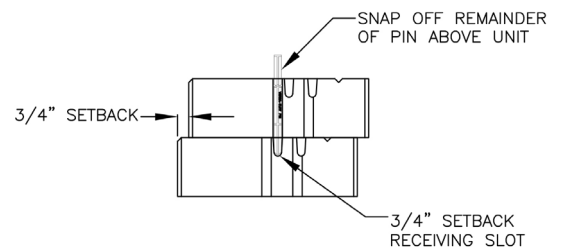


*Weathered unit is palletized the same.*

## LAYING PATTERNS



### ACCENT PINNING DETAIL



## NOTES



**DRYCAST  
 WARRANTY**



**OUTDOOR  
 LIVING**



**WALLS &  
 COLUMNS**

COLOR SWATCHES AVAILABLE AT [LAMPUS.COM](http://LAMPUS.COM) • ALL WEIGHTS ARE APPROXIMATE.

## APPLICATIONS