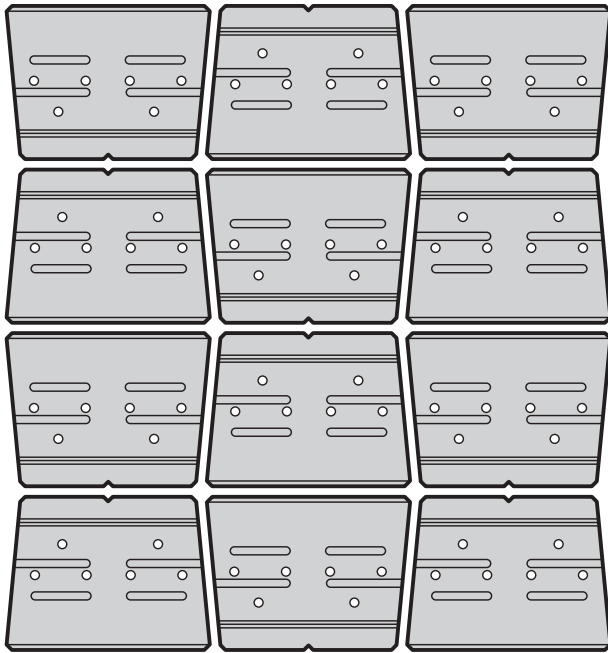


VERSA-LOK® STANDARD

PALLET OVERVIEW



24 units / pallet
 16 sq. ft. / pallet
 2 layers / pallet
 2,100 lbs. / pallet

SPECIFICATIONS

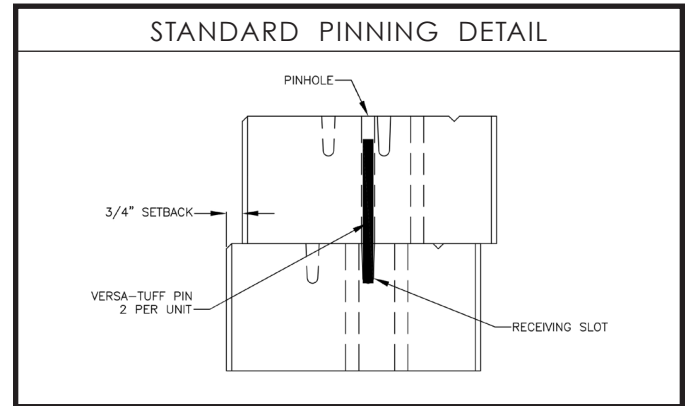
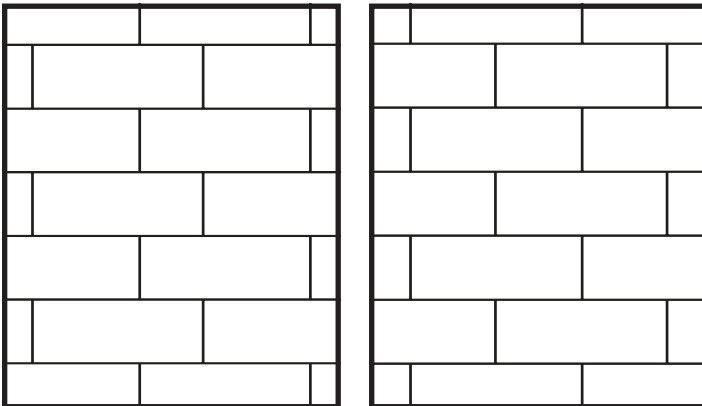


16" x 12" x 6"
 86 lbs. / unit
 1.5 units / sq. ft.
 8' minimum radius



Weathered unit is palletized the same.

LAYING PATTERNS



NOTES



**DRYCAST
 WARRANTY**



**OUTDOOR
 LIVING**



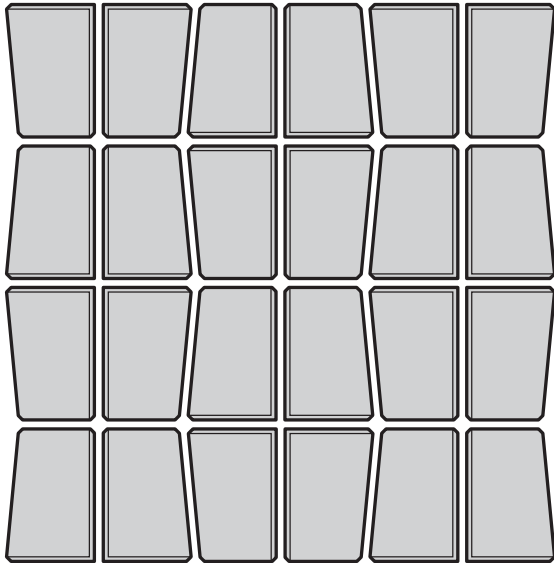
**WALLS &
 COLUMNS**

COLOR SWATCHES AVAILABLE AT LAMPUS.COM • ALL WEIGHTS ARE APPROXIMATE.

APPLICATIONS

VERSA-LOK[®] STANDARD

PALLET OVERVIEW

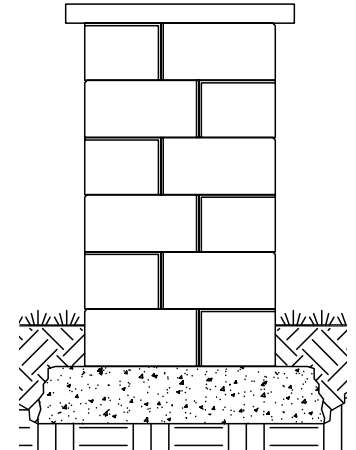
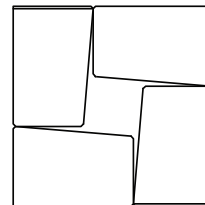
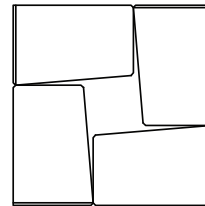


48 units / pallet
2 layers / pallet
2,100 lbs. / pallet

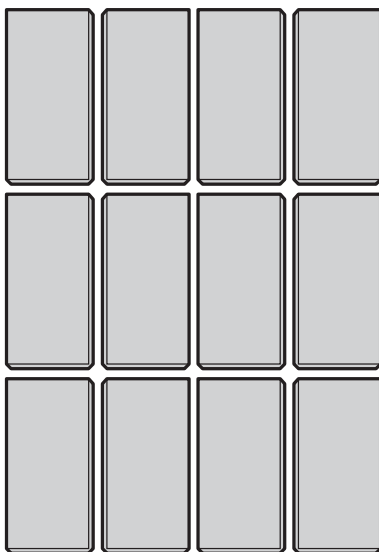
SPECIFICATIONS



HALF CORNER
8" x 12" x 6"
44 lbs. / unit



One pallet of half blocks will make
two 20" x 20" x 36" columns.

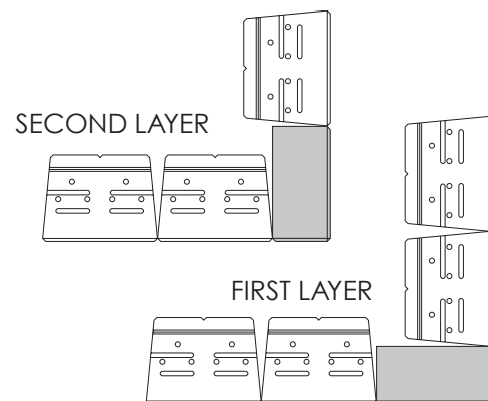


36 units / pallet
3 layers / pallet
2,280 lbs. / pallet



FULL RETURN CORNER
16" x 8" x 6"
63 lbs. / unit

**See above for column detail.*



To stay on half bond when installing a 90° outside corner,
alternate the direction of the full return corner block on
each row. Place masonry adhesive between corner
blocks for additional strength.

COLOR SWATCHES AVAILABLE AT LAMPUS.COM • ALL WEIGHTS ARE APPROXIMATE.